

# IEC LOCK®

—  
THE ORIGINAL & PATENTED  
RETROFIT SOLUTION

Distributed by



**OMEGA COMPOSANTS SARL**

220 rue Ferdinand Perrier 69800 SAINT-PRIEST – France  
Tél. +33 (0)4 78908564 – Fax +33 (0)4 78908465

e-mail: [omega@omegacomposants.fr](mailto:omega@omegacomposants.fr)





Suitable for use with any C20



Release tab



Release locking mechanism button



Suitable for use with any C14



Prevents accidental disconnection



Nylon LSZH



C19 lockable outlet



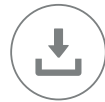
C13 lockable outlet



C13 lockable connector



C19 lockable connector



Space saving



Rear release locking mechanism

# Guards against accidental disconnection of computers, servers and most electrical appliances.

## WHAT IS IEC LOCK?

A unique patented mechanism for locking IEC connectors suitable for use with any standard C14 or C20 inlets.

- IEC LOCK is designed to help prevent accidental disconnection of computer and servers containing valuable data and critical equipment
- Suitable for various Data Communications applications that require a secure power source

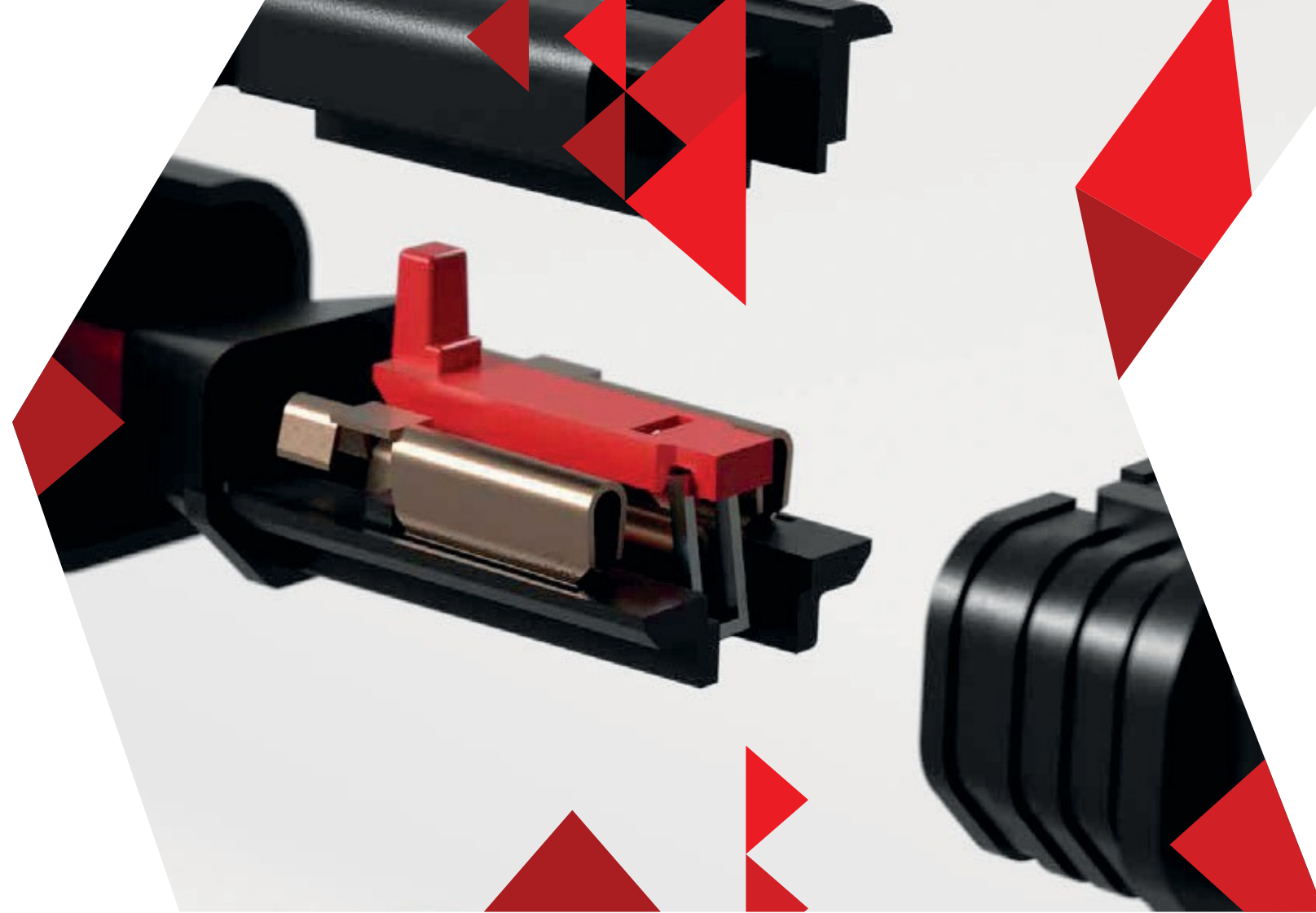
- Unique 'patented' lockable Female C13 & C19 connector 'IEC Lock®' Connectors and outlets
- Suitable to prevent vulnerable appliances becoming disconnected due to vibration

## HOW IT WORKS

---

- Pull the tab back and then push the connector into any standard IEC inlet, release the tab and it is locked in position
- Connector CANNOT be accidentally pulled or vibrated out of the inlet
- Slide back the 'red' tab to release and remove connector from inlet

*“Unique secure locking mechanism which provides connection integrity”*



## WHY IEC LOCK?

---

**Safety** - IEC Lock® guards against accidental disconnection.

**Various colours** - available to help identify individual power sources.

**Security** - IEC Lock® protects appliances that are vulnerable to vibration.

**Versatility** – Retrofit solution that suits any standard IEC inlet.

**Flexibility** - Total flexibility in assembling cable types, length and colour.

**LSZH** - IEC Lock® rewirable version offers flexibility whilst being LSZH (low smoke zero halogen) compatible.

# IEC LOCK C13 LOCKING CONNECTOR

*“The average total cost of unplanned application downtime per year is \$1.25 billion to \$2.5 billion.”*

- Protects appliances that are vulnerable to vibration
- Connector cannot be accidentally pulled or vibrated out of the inlet



10A MAX / 250V (EU / Australia / Korea / China)

15A MAX / 125V / 250V (USA / Japan)



RELEASE LOCKING MECHANISM



PREVENTS ACCIDENTAL DISCONNECTION



C13 LOCKABLE CONNECTOR



SUITABLE FOR USE WITH ANY C14 INLET



# IEC LOCK+ C13 LOCKING CONNECTOR

10A MAX / 250V (EU / Australia / Korea / China)

15A MAX / 125V / 250V (USA / Japan)

- Protects appliances that are vulnerable to vibration
- Connector cannot be accidentally pulled or vibrated out of the inlet
- Release from the rear when space is limited
- Increased visibility in narrow or tight spaces



## IEC LOCK+



SUITABLE FOR USE WITH ANY C14



SPACE SAVING



REAR RELEASE LOCKING MECHANISM



PREVENTS ACCIDENTAL DISCONNECTION



NYLON LSZH



C13 LOCKABLE CONNECTOR



# IEC LOCK+ C13 REWIREABLE LOCKING CONNECTOR

*“Gartner recently estimated that the cost of IT downtime to businesses is around £4,300 per minute or £258,000 per hour”*

- Rewireable - offering total
- 
- LSZH - Low Smoke Zero Halogen
- Cable size up to 3 x 1.5mm<sup>2</sup> / 3 x 14AWG • Up to 3 x 2.0mm<sup>2</sup> (Japan)



10A MAX / 250V (EU / Australia)

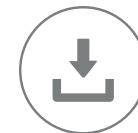
15A MAX / 125V / 250V (USA / Japan)



**IEC  
LOCK+**



SUITABLE FOR USE WITH ANY C14



SPACE SAVING



REAR RELEASE LOCKING MECHANISM



PREVENTS ACCIDENTAL DISCONNECTION



NYLON LSZH



C13 LOCKABLE CONNECTOR



# IEC LOCK C19 LOCKING CONNECTOR

*“Downtime can cost you, not only in lost revenue but it can also damage productivity, brand reputation, and have legal repercussions.”*

- Protects appliances that are vulnerable to vibration
- Connector cannot be accidentally pulled or vibrated out of the inlet



16A MAX / 250V (EU / Australia / China)

20A MAX / 125V / 250V (USA / Japan)



SUITABLE FOR USE WITH ANY STANDARD C20



RELEASE LOCKING MECHANISM



PREVENTS ACCIDENTAL DISCONNECTION



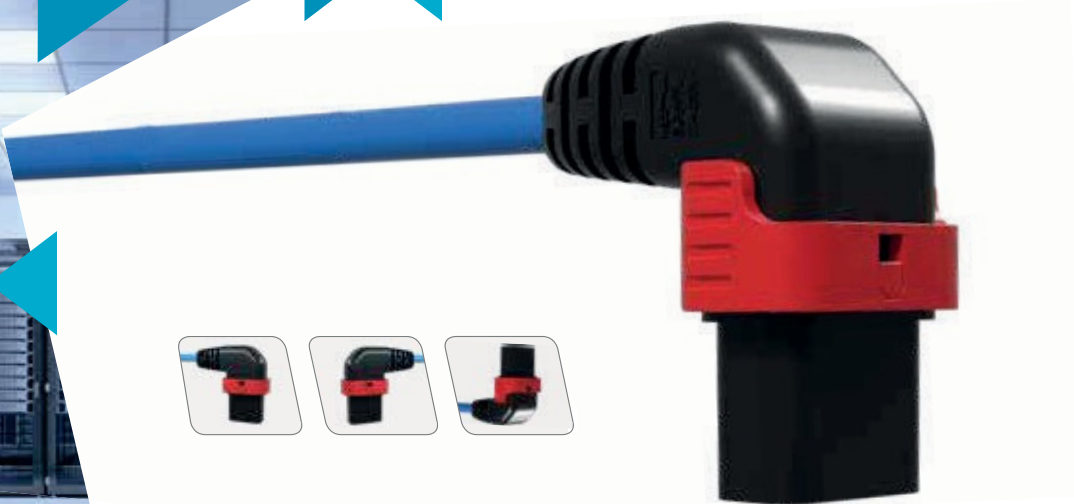
C19 LOCKABLE CONNECTOR



# ANGLED IEC LOCK C13 LOCKING CONNECTOR

10A MAX / 250V (EU / Australia)

15A MAX / 125V / 250V (USA / Japan)



- Protects appliances that are vulnerable to vibration
- Connector cannot be accidentally pulled or vibrated out of the inlet
- Space availability / constraints
- Different angles for ease of access



SPACE SAVING



RELEASE LOCKING MECHANISM



PREVENTS ACCIDENTAL DISCONNECTION



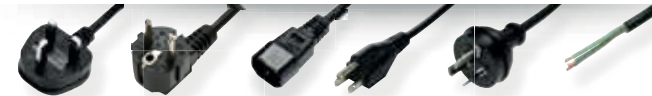
NYLON LSZH



C13 LOCKABLE CONNECTOR



SUITABLE FOR USE WITH ANY C14



## IEC LOCK C13 REWIREABLE ANGLED LOCKING CONNECTOR

*“The average cost for 30 seconds of downtime during a major live sporting event to a broadcasting network is estimated to be around \$5m”.*

- Protects appliances that are vulnerable to vibration
- Connector cannot be accidentally pulled or vibrated out of the inlet
- Different angles for ease of access



10A MAX / 250V (EU / Australia)

15A MAX / 125 / 250V (USA / Japan)



SUITABLE FOR USE WITH ANY C14



SPACE SAVING



RELEASE LOCKING MECHANISM



PREVENTS ACCIDENTAL DISCONNECTION



NYLON LSZH



C13 LOCKABLE CONNECTOR



# IEC LOCK C13 LOCKING OUTLET

10A MAX / 250V (EU / China)

15A MAX / 250V (USA)

## IEC Lock Appliance Outlet

Unique patented lockable female C13 IEC outlets guard against accidental disconnection of any standard C14 inlet. Protects appliances that are vulnerable to vibration by preventing accidental removal.



- Snap-in mounting from front
- Solder terminal or quick connect from single terminal
- Class 1 Protection
- Integral plug retention feature
- 6.3mm Terminals
- 1.5mm panel thickness



C13 LOCKABLE  
OUTLET



PREVENTS ACCIDENTAL  
DISCONNECTION



RELEASE LOCKING  
MECHANISM



SUITABLE FOR USE  
WITH ANY C14

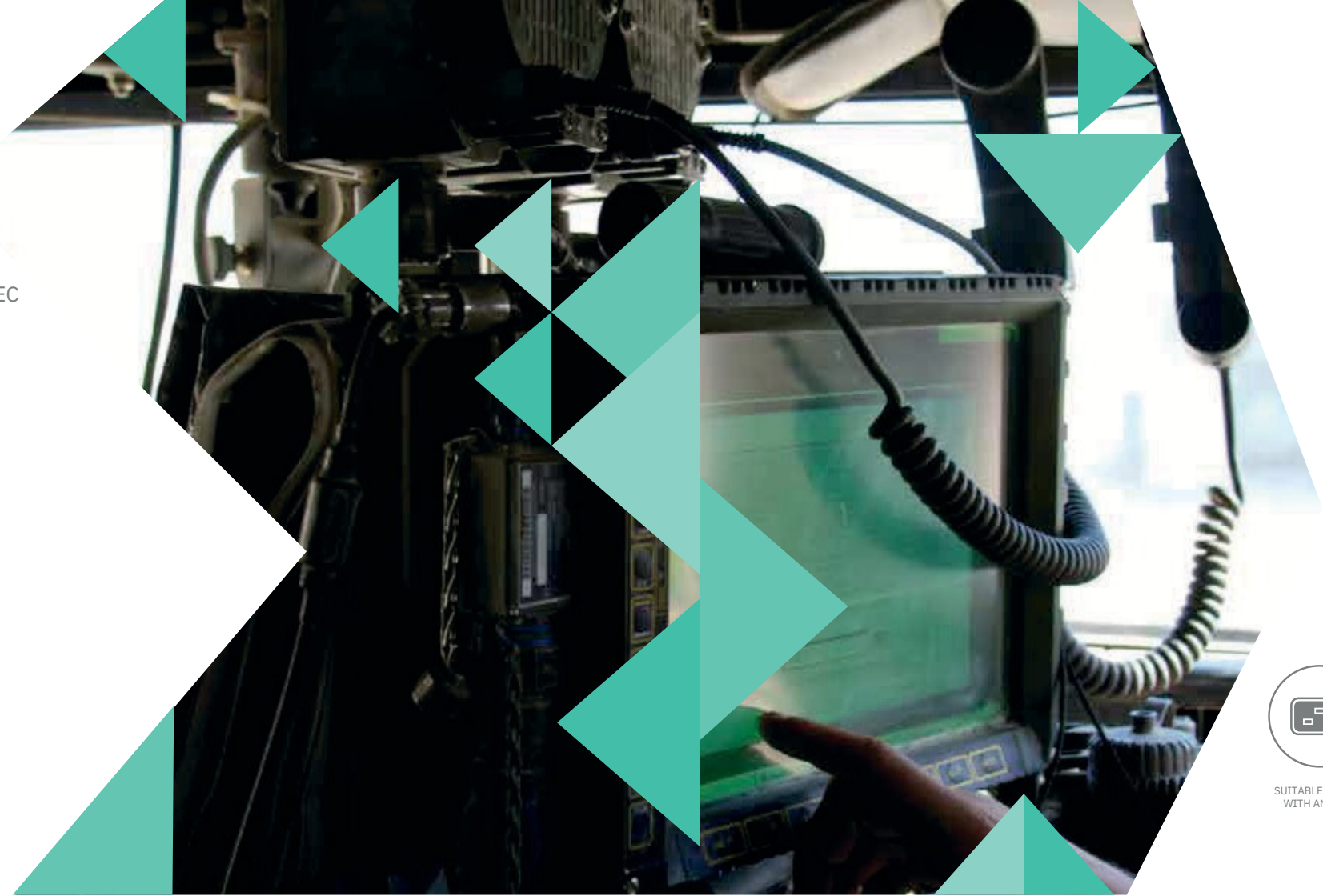


# IEC LOCK C19 LOCKING OUTLET

## IEC Lock Appliance Outlets

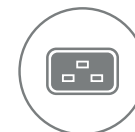
Connectors and outlets can be used with standard IEC plugs and inlets. But for extra protection use both to ensure against accidental removal of power cables connected to PDU's, Servers, Network devices etc..

- Snap-in mounting from front
- Solder terminal or quick connect from single terminal
- Class 1 Protection
- Integral plug retention feature
- 6.3mm Terminals
- 1.5mm panel thickness



16A MAX / 250V (EU / Australia / China)

20A MAX / 250V (USA)



SUITABLE FOR USE WITH ANY C20



RELEASE LOCKING MECHANISM



PREVENTS ACCIDENTAL DISCONNECTION



C19 LOCKABLE OUTLET



# MULTI-TIER C13 LOCKING OUTLET

- Space saving with easier accessibility
- Each outlet has an independent release locking mechanism
- The locking mechanism protects against accidental disconnection and maintains uptime
- The button to operate the mechanism is located to the side for easy access
- Nylon LSZH (Low Smoke Zero Halogen)
- 6.3mm Terminals
- 1.5mm panel thickness



10A MAX / 250V (EU / Australia / China)

15A MAX / 250V (USA)



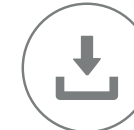
**12mm Saved**  
4 tier versions use 12mm less space than 4 individual IEC locks.



**21mm Saved**  
6 tier versions use 21mm less space than 6 individual IEC locks.



SUITABLE FOR USE WITH ANY C14



SPACE SAVING



RELEASE LOCKING MECHANISM



PREVENTS ACCIDENTAL DISCONNECTION



NYLON LSZH



C13 LOCKABLE OUTLET





**IEC**  
**LOCK**

Scolmore Park, Landsberg,

Tamworth, Staffordshire

B79 7XB United Kingdom

T: +44 (0)1827 63454

F: +44 (0)1827 63362

E: [oemsales@scolmore.com](mailto:oemsales@scolmore.com)

E: [exportsales@scolmore.com](mailto:exportsales@scolmore.com)

[www.ieclock.com](http://www.ieclock.com)



MAR4151